

### **Will I have to pay extra costs?**

If you require extra childcare hours outside of your course or training time, this will be considered as an extra cost. Parents should not be charged extra for food.

### **Will I be required to complete any forms?**

Yes you will be required to complete a CETS parental declaration form (including the PPS numbers of parent and child/children). Each childcare service will then require that parents availing of a CETS place complete, sign and date their attendance form on a weekly basis. Each participating in an eligible FÁS/VEC course signs the form to declare that they attended a full-time or part-time training course during the named week, and that their child/children availed of a free childcare place under the CETS scheme while they attended that course. The form also required parents to sign that they understand that they will not retain entitlement to a free place when they cease attendance at that training course.

### **Important Notes**

- The CETS scheme will provide capitation directly to full day and school age childcare services for childcare places in respect of FÁS and VEC participants.
- Please contact Leitrim County Childcare Committee for a list of eligible services.

*The information provided in this leaflet is correct at the time of production. The information in this leaflet was sourced from the DCYA and FÁS.*

If you require any further information please contact  
Leitrim County Childcare Committee  
Tel: 0719640870 Email: [info@leitrimchildcare.ie](mailto:info@leitrimchildcare.ie)



## **Leitrim County Childcare Committee**

Coiste Cúram Leanai Chontae Liatroma

Laird House, Church Street, Drumshanbo, Co. Leitrim

Tel: 0719640870 Fax: 0719640871

Email: [info@leitrimchildcare.ie](mailto:info@leitrimchildcare.ie)



## **Childcare Employment & Training Support (CETS) Scheme**

## **Information for Parents**



### **What is the Childcare Employment & Training Support Scheme?**

It is a scheme designed to support the childcare needs of participants in training and educational courses operated by FÁS and the VEC. Childcare services accepted onto the scheme by the Department of Children and Youth Affairs (DCYA) will keep a number of childcare places open for parents who may require a CETS place. This scheme is available to parents whose children have not yet completed primary school. The DCYA introduced the CETS scheme in September 2010.

### **What are parents entitled to?**

As a parent participating on an eligible FÁS/VEC course you are entitled to free childcare for the duration of your course.

VEC Students will normally qualify for a childcare place for 43 weeks from September to June of each year.

FÁS Trainees will generally qualify for a CETS childcare place for courses of at least 10 weeks.

The following FÁS programmes are not eligible:

- Community Employment (CE)
- Job Initiative (JI) Supported Employment
- Apprenticeship, night courses, FÁS e-college, job clubs and the work placement programmes.

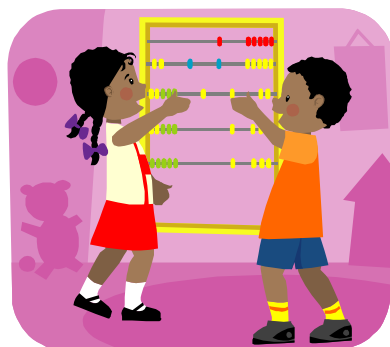
### **Which childcare services are eligible to offer CETS places?**

Childcare services providing full day care which may include a school age childcare service.

Stand alone school aged childcare services may be considered.

Community and private childcare services.

Childcare services participating in the CCS and/or ECCE programmes.



### **How do I access the CETS scheme?**

When you receive a letter from FÁS/VEC offering you a training place inform them if you have childcare requirements. If your course is eligible for the CETS scheme, they will provide you with a letter stating such and a list of childcare services who are participating in the CETS scheme. Contact a childcare service to reserve a CETS place or contact Leitrim County Childcare Committee. FÁS/VEC will give trainees a letter confirming their start/end dates for courses. Give this letter to the childcare service as confirmation that you have a place on the training course.

### **Can I avail of other childcare schemes?**

You will normally only be able to claim for one scheme; CETS, CCS or ECCE at a time. The one exception to this are parents who may take up a short-term FÁS course (normally for 10 weeks) during the academic year. If your child is already receiving the Free Preschool Year in Early Childhood Care and Education you will be able to qualify for a CETS place without losing your child's ECCE place.

Before you avail of any scheme, it is recommended that you consider which one will be more financially beneficial to you and your family.

### **Who is the capitation grant paid to?**

The capitation grant is paid to childcare services who qualify for the CETS scheme for each childcare place it is contracted for with the DCYA. The capitation fee will be paid to childcare services on a term by term basis:

€170 per week for a full day service (at least 10 hours)

€95 per week for a half day service (at least 5.5 hours)

€50 per week for an afterschool service without provision of a pick up service (at least 3 hours)

€95 per week for an afterschool with provision of a required pick up service